

Transorfilter

Evacuating and SF₆ refilling unit
FV0016



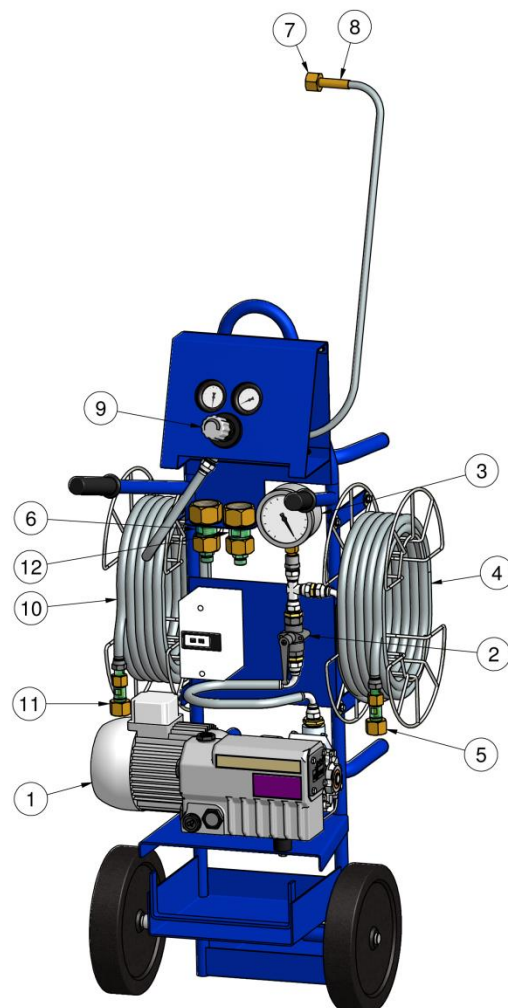
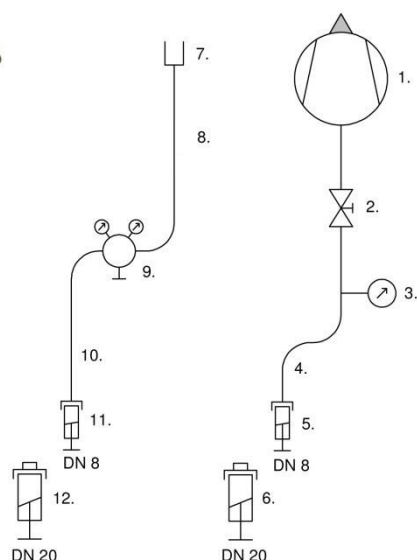
TRANSORFILTER
www.transorfilter.se **Sweden**

Transorfilter, FV-0016

Transorfilter FV-0016 for evacuation of air and refilling of SF₆ gas into gas insulated switchgear and circuit breakers.

Standard equipment:

1. Vacuum pump for air, 16 m³/h, Final vacuum < 1 mbar
2. 2-way ball valve, 1/2"
3. Vacuum gauge -1/0 bar
4. Wire-braided hose 3/8", L = 6m
5. Coupling tongue part DN8
6. Coupling tongue part DN20
7. SF₆ bottle connection W 21,8 x 1/14"
8. High pressure hose with safety line
9. SF₆ pressure reducer 0-10 bar
10. Wire-braided hose 3/8", L = 6m
11. Coupling tongue part DN8
12. Coupling tongue part DN20



Measurements	FV-0016
Length:	700 mm
Width:	520 mm
Height:	1200 mm
Weight, approx. excl. gas bottle:	50 kg

Technical data	FV-0016
Air vacuum pump (oil-lubricated):	1 pcs
Air vacuum pump, nominal flow rate:	16 m ³ /h
Air vacuum pump, final pressure:	0,5 mbar
Voltage and frequency:	3 x 400V, 50Hz ***

*** Other voltage and frequency specifications at your request.
Subject to changes without notice.

